

Always There For
Your Care



Sehwin Healthcare Pvt. Ltd.®

An ISO 9001 : 2015 Certified Co.



THE EFFECTIVE REMEDY
EXTRACTION STONE FROM ROOT

SEHWIN[®] ST

KIDNEY STONE REMOVAL **HERBAL SYRUP**

ALCAGEN

Disodium Hydrogen Citrate 1.53gm **ALKALIZER SYRUP**

- ▶ Prevents surgical intervention relapse.
- ▶ Clears crystalluria.
- ▶ Arrests burning micturition.
- ▶ Helps flushing of particles.
- ▶ Checks the process of stone formation & prevents recurrence.

*** Renal Calculi * Urethral Calculi**

*** Dysuria and Haematuria * Burning Micturition**

*** Secondary Infections due to Calculi**





COOL SOLUTION FOR
BURNING GERD

SEHPAN-DSR

Pantoprazole 40 mg & Domperidone 30 mg SR **Capsules**

SEHPAN-D **SEHPAN-40/I.V.**

Pantoprazole 40 mg & Domperidone 10 mg **Tablets**

Pantoprazole 40 mg **Tablets/ Injection**

PANTOPRAZOLE

Effective over full 24 hours in treatment of gastroesophageal reflux disease.

Well tolerated in variety of patient types.

DOMPERIDONE

Alleviates satiation, bloating and nausea by accelerating gastric emptying.

- › GASTROESOPHAGEAL REFLUX DISEASE
- › NON-EROSIVE GERD
- › NSAIDS INDUCED GASTRITIS
- › CHRONIC GASTRITIS/ FUNCTIONAL DYSPEPSIA
- › NAUSEA ASSOCIATED WITH ACID PEPTIC DIORDERS





**OVERCOME THE GASTRIC
DISCOMFORT EFFECTIVELY**

Rebiwin-DSR

Rabeprazole 20 mg + Domperidone 30 mg (SR) **Capsule**

Rebiwin-20

Rabeprazole 20 mg **Tablets**

ACTIRAB-LSR

Rabeprazole Sodium (Enteric Coated) and Levosulpiride (SR) **Capsule**

RABEPRAZOLE

High clinical efficacy in patients with functional dyspepsia.¹
Achieves optimal acid suppression since first administration.²

DOMPERIDONE

Reduces severity of nocturnal dyspeptic symptoms in patients with functional dyspepsia.³
Accelerates gastric emptying.⁴

LEVOSULPIRIDE

Useful therapeutic option in the management of patients with functional dyspepsia, as well as in those with delayed gastric emptying.

**Functional Dyspepsia | Non-erosive Reflux Disease
Gastroesophageal Reflux Disease | Gastric Or Duodenal Ulcer**

1. Adv Ther. 2000 Jul-Aug; 17(4):190-4. 2. Ther Clin Risk Manag. Jun 2007; 3(3):363-379. 3. World J Gastroenterol 2010 Feb 7; 16(5):613-7.
4. J Gastroenterol Hepatol. 2006 No.; 21(11):1664-8.





CURB THE ACID RIGHT FROM THE START

SEHZOLE D

Omeprazole 20 mg & Domperidone 10 mg SR Capsules

Provides superior relief of night-time pain when compared to ranitidine.¹

Significantly heals more ulcer than with ranitidine 150 mg B.I.D.¹

Provides fast and long lasting symptoms relief.²

Effective and safe in acid induced peptic disease.²

1. Scand J Gastroenterol Suppl. 1989; 166-62; Discussion 74-5
2. MMW wochenschr Med. 2012 Dec 17; 154 Suppl 4:110

- ◀ **DUODENAL ULCER**
- ◀ **GASTRIC ULCER**
- ◀ **SYMPTOMATIC ULCER**
- ◀ **EROSIVE ESOPHAGITIS**
- ◀ **DYSPEPSIA**
- ◀ **STRESS GASTRITIS**





Calms the burning Stomach due to hyperacidity

SEHSI-MPS

Magaldrate 400mg + Simethicone 20mg Syrup

Magaldrate

- Magaldrate increases intra-gastric pH to 3-5 thus, no recurrence of acid reflux¹
- Inactivates Pepsin and considerably binds bile acids & lysolecithin, agents responsible for gastritis, peptic ulcers, stress ulcer & peptic oesophagitis
- Safe & effective antacid that prevents gastrointestinal bleeding in hospitalized patients suffering from stress induced ulcers²

Simethicone

- FDA approved safe & effective gastric defoaming agent that breaks up gas bubbles making them easier to eliminate from body³

**Acid indigestion | Heartburn Duodenal and gastric ulcers
Esophagitis Bloating Gastroesophageal reflux**





PERFECT SOLUTION FOR
MIXED INFECTIONS

SEHFLO OZ

Ofloxacin 200 mg & Ornidazole 500 mg **Tablets**
Ofloxacin 0.75%w/w+Ornidazole 2%w/w+ Itraconazole 1%
W/w+clobetasole + Propionate 0.5% W/w **Cream**

SEHFLO OZ SKIN CREAM

Ofloxacin IP 0.75%w/w + Ornidazole IP 2%w/w +
Itraconazole IP 1% w/w + Clobetasol Propionate IP 0.05w/w
+ Methylparaben IP 0.2% w/w **SKIN CREAM**

SEHFLO 200

Ofloxacin 200 mg **Tablets**

- Ensures broader spectrum of activity against both aerobes & anaerobes.¹
- Highly effective for treatment of enteritis caused by anaerobic Bacteria.²
- Significantly improves compliance since with simpler dose administration.

Gastro Intestinal Infections | Gynaecological Infections
Surgical Wound Infections | Urinary Tract Infections
Mixed Infections Of Aerobes & Anaerobic Origin

1. Trends in Medical Research, 2009: 4(2):30-34 | 2. A Behl M. Ahuja, A.S. Dhake, Indian J. Pharm Sci, 67(2005)479.



**DRO
PRO**



**Relieve Spasm and Allocate
COOLNESS IN GIT**

DROWIN

Mefenamic Acid 250 mg & Drotaverine 80 mg **Tablets**

MEFENAMIC ACID :

Prostaglandin inhibitor useful in treatment of patients with primary dysmenorrhea.¹

DROTAVERINE :

Antispasmodic, relieves pain associated with muscle cramps.

EFFECTS OF COMBINATION

More efficacious in comparison to metamizole in dysmenorrhea.²

Better tolerated than metamizole.²

*** SPASMODIC DYSMENNORRHOEA * BILIARY COLIC
* GASTRO-INTESTINAL COLIC * URETERIC COLIC**

1. International Journal of Gynaecology and Obstetrics Volume 93, Issue 1, Pages 72-73, April 2006
2. Indian J Pharmacol, 2013 Mar-Apr;45(2):180-3





THE PROTECTION SHIELD OF PRE & PROBIOTICS

Sehpro

Prebiotic & Probiotic **Herbal Capsules**

Sehpro

Cyproheptadine Hcl 2mg +
Tricholine Citrate 275mg **Syrup**

PREBIOTIC :

Allow specific changes in GI microflora that confers benefits upon host health.
Improve gut barrier function and host immunity.

PROBIOTIC :

Reduces duration of antibiotic-associated diarrhea.
Normalizes stool passage and stool consistency in irritable colon.

- ▶ **Diarrhoea (Bacterial, Viral, Protozoal)**
- ▶ **Antibiotic Associated Diarrhoea**
- ▶ **Inflammatory Bowel Disease**
- ▶ **Lactose intolerance**

Cyproheptadine Hcl : An antihistaminic and antiserotonergic Agent.
Stimulates appetite in under weighty people.

Tricholine Citrate : A nutritive & appetizer. | Improves liver functions by lipotropic & choleric action.





HAJ
ZYM

RELIEVE **CONSTIPATION** & RELAX

SEHAJ (Churana)

Herbal Digestive Improve Churana

- ▲ A herbal laxative which helps provide instant relief in constipation, acidity and indigestion, and facilitates smooth stool passage.
- ▲ Helps in cleansing and detoxifying the body naturally and helps in maintaining a healthy digestive system. It normalises the elimination process and helps in flushing toxins from your system gently.
- ▲ It is a clinically researched ayurvedic formulation that can be used regularly without causing dependence. It doesn't have any additives or preservatives and thus free from any side effects





HERBAL HEPATO PROTECTIVE & STIMULANT

SEHZYME

Ayurvedic Enzyme With Liver Tonic

SEHZYME **SEHZYME-F**

For Complete Digestion **Drops**

Ayurvedic Enzyme With Fungal Diastase **Tonic**

- ▶ Normalizes basic appetite-satiety rhythm.
- ▶ Prevents inflammation of the liver
- ▶ Plays an important role in relieving symptoms of altered liver functions.
- ▶ Hepatoprotective effect can be attributed to diuretic, anti-inflammatory, anti-oxidative, and immunomodulating properties of component herbs.

*** Viral Hepatitis * Alcoholic Liver Disease**
*** Anorexia * Pre-cirrhotic Conditions And Cirrhosis**
*** Jaundice And Loss of Appetite**





LIV
GOL

A Comprehensive
HEPATO CORRECTIVE/PROTECTIVE/ STIMULANT

SEHLIV

An Ayurvedic Liver Syrup

- Normalizes basic appetite-satiety rhythm
- Prevented inflammations of the liver
- Hastens recovery recovery period in infective hepatitis
- Ensures protection from alcohol-induced hepatic damage

ANOREXIA | VIRAL HEPATITIS | ALCOHOLIC LIVER

LOSS OF APPETITE AND DAMAGE | JAUNDICE

PRE-CIRRHOTIC CONDITIONS AND CIRRHOSIS





LIVER IN SAFE HANDS **SEHWIN[®]-GOLD** Tablet

Silymarin 140mg + L-Ornithine 50mg + L-Glutathione 15mg + N-Acetylcysteine 50mg + Co-Enzyme Q 10 2.5mg + Inositol 50mg + Vitamin D3 400 IU + Vitamin E Actate 12.5 IU + Vitamin C 40mg + L-Carnitine 50 mg + Choline Bitartrate 50 mg + Calcium Pantothenate 10mg + Zinc Sulfate Monohydrate 52.5mcg + Vitamin B1 2.5mg + Vitamin B2 3mg + Vitamin B6 5mg + Ferrous Fumarate 3mg + Folic Acid 1mg + Vitamin B12 15mcg

Silymarin

- Potent natural antioxidant prevents liver damage caused by free radicals
- Prevents hepatic lipid peroxidation
- Increases the glutathione synthesis inside the liver cell.

L-Ornithine

- Stimulate human growth hormone (HGH) in the pituitary gland

L-Aspartate

- Serves as a precursor for synthesis of proteins, oligopeptides, purines, pyrimidines, nucleic acids and L-arginine.

SEHWIN[®]-GOLD Syrup

Silymarin 70mg, L-Ornithine L-Aspartate 250mg, Trichlorine 275mg, Thiamine 2mg, Riboflavin 2.5mg, Pyridoxine 1.5mg, Niacinamide 25mg, D-Panthenol 5mg, Cyanocobalaim 5mcg **SYRUP**

INDICATIONS

* Acute & Chronic Hepatitis * Fatty Liver * Alcoholic Liver Damage

* Liver Cirrhosis * Post Hepatitis Convalescence

* Adjunct to Hepatotoxic Drug * Hepatic Encephalopathy Jaundice





PAS
SSP

Take a Step Forward In Relieving Cholestasis

HEPASH-300

Ursodeoxycholic Acid - 300mg **TABLET**

- ✓ Is a naturally occurring bile acid used to treat certain liver and gallbladder conditions.
- ✓ Helps dissolve small cholesterol gallstones, reducing the need for surgery.
- ✓ Enhances liver function in patients with chronic liver diseases, such as primary biliary cholangitis (PBC) and primary sclerosing cholangitis (PSC).
- ✓ In conditions like PBC and PSC, Ursodeoxycholic Acid (UDCA) can slow the progression of the disease, improving the quality of life for patients.
- ✓ Offers a non-surgical option for patients who are not candidates for surgery or prefer to avoid surgical procedures.

Stimulates

Impaired Biliary Secretion

Highly Effective

In Preventing Gallstone Formation

- Protects Liver Cells
- Improves Liver Function
- Reduces Liver Inflammation
- Enhances Bile Flow
- May Improve Cholesterol Levels





**PAIN MANAGEMENT
REDEFINED WITH PERFECTION**

SEHWIN[®]-SP

Aceclofenac 100mg + Paracetamol 325mg + Serratiopeptidase 15mg **Tablets**

SEHWIN[®]-MR SEHWIN[®]-NIM SEHWIN[®]-125

Aceclofenac 100mg + Paracetamol 325mg + Chlorzoxazone 250mg **Tablets**

Nimesulide 100 mg + Paracetamol 325 mg **Tablets**

Aceclofenac 50 mg + Paracetamol 125mg **Syrup**

SEHWIN[®]-AP SEHPARA-650 SEHWIN-TH

Aceclofenac 100mg + Paracetamol 325mg **Tablets**

Paracetamol IP 650 mg **TABLET**

Aceclofenac IP 100mg + Paracetamol IP 325mg +
Thiocolchicoside IP 4mg

ACECLOFENAC

- Micronised form for Quicker Action.
- Best, Safe and Largely Prescribed NSAID.

PARACETAMOL

- Time tested antipyretic/analgesic.
- Best, Safe co-prescribed in combination with NSAID.

THIOLCHICOSIDE

A skeletal muscle-relaxant drug used in the treatment of orthopedic, traumatic, and rheumatologic disorders. Indicated as an adjuvant drug in the treatment of painful muscle contractures and is indicated in acute spinal pathology.

SERRATIOPEPTIDASE

- Accelerates liquification of Pus and Mucus.
- Improves Action of Antibiotics.
- Has Anti-inflammatory Anti-edemic and fibrinolytic activity & acts rapidly on localized inflammation.

NIMESULIDE

- COX-2 selective NSAID with analgesic and antipyretic properties.
- Less gastrointestinal side effects than other non-selective NSAIDs.¹

1. <http://ijpbs.net/volume2/issue2/bio/25.pdf>

*** Post Operative States**

*** Sports Injuries**

*** Surgical/Traumatic Fracture Treatment of Pain & Inflammation**

*** Dental Pain**

*** Soft Tissue Injury**





**DIC
SWM**

**PAIN MANAGEMENT
REDEFINED WITH PERFECTION**

SEHDIC ▶ SP

Diclofenac Potassium 50 mg + PCM 325 mg +
Chlorzoxazone 250 mg **Tablets**

SEHDIC ▶ FAST

Diclofenac 75 mg/1 ml **Injection**

SEHDIC ▶ FAST

Diclofenac+Linseed Oil **Gel**

DICLOFENAC : Provides pain relief in patients with soft tissue injuries.

PARACETAMOL : Significantly reduces intensity of pain by raising pain threshold.

CHLORZOXAZONE : Inhibits multisynaptic reflex arcs involved in producing and maintaining skeletal muscle spasm.¹

- ▶ **NECK/SHOULDER/BACK PAIN**
- ▶ **TENDONITIS/TENOSYNOVITIS/BURSITIS**
- ▶ **MUSCULOSKELETAL DISORDERS**
- ▶ **SOFT TISSUE INJURIES WITH SPASM AND INFLAMMATION**

1. Int. J Appl Basic Med. Res. 2014 Jul-Dec; 4(2): 101-105





Innovative combination for the treatment of Fever & Pain

SEHWIN-250 M

MEFENAMIC ACID 100MG + PARACETAMOL 250MG SUSP

MEFENAMIC ACID

One of the effective NSAID

Blocks the actions of prostaglandin in body, lowering inflammation

PARACETAMOL

- Possesses effective analgesic & antipyretic properties
 - Provides rapid relief from fever & body ache
 - Faster Onset of action

Indications :

***PAIN * FEVER * INFLAMMATION**





Get the best result of
ANTI-ALLERGIC COMBINATION

**PLS
ROL**

SEHWIN[®]-PLUS

PARACETAMOL - 500MG, PHENYLCHLORIDE HYDROCHLORIDE - 5MG, CETERIZINE HYDROCHLORIDE - 5 MG Tablet

SEHWIN[®]-PLUS

Paracetamol 250mg + Phenylephrine HCL 5mg + CPM 2mg Syrup

PARACETAMOL

An ideal and time tested analgesic, antipyretic.
Well absorbed with a rapid onset of action.

CETIRIZINE

Reduces cough intensity and frequency.
(Allergy, 1997, Jul, 52(7): 752-754)

PHENYLEPHRINE

A powerful antitussive.
Treat nasal congestion.

CAFFEINE : A mood elevator.

*** SEASONAL COUGH & COLD* COMMON COLD * CONGESTION**





In abouts of serve Cough & Cold...

CASROL-D

Dextromethorphan Hydrobromide IP 10mg + Chlorpheniramine Maleate IP 2mg + Phenylephrine HCL IP 5mg **Syrup**

CASROL-LS

Ambroxol HCL30mg + Guaiphenesin IP 50mg + Levosalbutamol Sulphate **Syrup**

CASROL-D Junior

Dextromethorphan Hydrobromide IP 10mg+Chlorpheniramine Maleate IP 2mg+ Phenylephrine HCL IP 5mg **Suspension**

CASROL-LS Junior

Ambroxol hcl30mg+ Guaiphenesin IP 50 mg+levosalbutamol sulphate **Suspension**

Dextromethorphan

A cough supplement that acts affecting the signals in the brain that trigger the cough reflex

Chlorpheniramine Maleate

Reduces the secretion of natural chemical Histamine in the body

Histamines can produce symptoms of sneezing, itching, watery eyes & running nose

Phenylephrine

Offers potent & efficient decongestant relief

Allergic Cough * Whooping Cough





CHANGE IN SEASON
HAS EVERY REASON FOR
COUGH & CONGESTION

CASROL ▶ H

Herbal Cough Syrup With Tulsi, Honey & Shunthi

RLH
MOX

- ▲ A potent mucolytic
- ▲ An effective demulcent.
- ▲ Offers a natural relief in cough management.
- ▲ A gentle bronchodilator to ensure normal breathing.
- ▲ An effective anti-histaminic without side-effects of sedation.

*** NON-ALCHOLIC**
*** NON SEDATIVE**
*** SAFE FOR CHILDREN**

***Smoker's Cough * Productive Cough * Spasmodic Cough**
***Non-Productive Cough Acute and Chronic Bronchitis**





**IN SERIOUS INFECTIONS,
THAT DO NOT ALLOW
SOME MORE TIME**

SEHMOXY CV^{LB}

Amoxicillin 500 mg + Clavulanic acid 125mg With Lactic Acid Bacillus **Tablets**

SEHMOXY CV^{FORTE}

Amoxicillin 400 mg + Clavulanic Acid 57mg **DRY SYRUP**

SEHMOXY CV

Amoxicillin 200 mg + Clavulanic Acid 28.5mg **DRY SYRUP**

Break Out Multiple Infections

The Combination :

- Provides potent broad spectrum of antibacterial activity, coverage of beta-lactamase-producing pathogens.¹
- More efficiently eradicates beta-lactamase producing strains & S.pneumoniae strains.²
- Excellent clinical activity in pharyngotonsillitis.³

- ▲ **Upper Respiratory Tract Infections**
- ▲ **Genito-urinary Tract Infections**
- ▲ **Skin And Soft Tissue Infections**
- ▲ **Bone And Joint Infections**
- ▲ **Intra-abdominal Sepsis**
- ▲ **Lower Respiratory Tract Infections**

1. J Antimicrob Chemother. 2004 Jan; 53 Suppl 1:13-20.

2. Clin Pharmacokinet. 2005;44(11):1097-115.

3. Clin Ther. 2006 Jan; 28(1):99-109.





Drop Down the rate of **INFECTION**

SEHZI **250** **500**

Azithromycin 250 mg & 500 mg Tablets

HZI
CEF

- ▶ More potent against gram-negative organisms.
- ▶ Decreases the incidence of exacerbations of COPD.
- ▶ Provides short-duration & high-compliance regimen that improves outcomes.
- ▶ Shows very good record of safety.
- ▶ **Acute Bacterial Sinusitis**
- ▶ **A Community-acquired Pneumonia**
- ▶ **Acute Bacterial Exacerbations of COPD**
- ▶ **Genital Ulcer Disease**
- ▶ **Urethritis/Cervicitis**
- ▶ **Skin and Skin Structure Infections**





UNBEATABLE PARTNERS
Against treatment of Severe Infections

Sehcef 0

Cefixime Trihydrate 200 mg & Ofloxacin 200 mg Tablets

Sehcef ^{100DT}_{200DT}

Cefixime Anhydrous 100mg Tablets

Cefixime Anhydrous 200mg + Lactic acid bacillus 60 million Spores Tablets

Sehcef 50

Cefixime 50mg Dry Syrup

CEFIXIME : Very effective against resistant S.Typhi when compared to FLuoroquinoloes.¹

OFLOXACIN : Prevents relapse to typhoid.²

BENEFITS OF COMBINATION : Shows high efficacy with excellent tolerability and safety.

1. Pak J Med Sci 2012 Vol. 28 No. 4

2. BMB. 2009 Jun 3;338:b 1865.

3. Indian Journal of Basic & Applied medical Research; September 2012: Vol-1, Issue 4, P. 296-303

- ▲ **TYPHOID FEVER**
- ▲ **URINARY TRACT INFECTIONS**
- ▲ **INTRA ABDOMINAL INFECTION**
- ▲ **NOSOCOMIAL INFECTION**
- ▲ **SOFT TISSUE INFECTION**





IN WAR AGAINST LETHAL MICROBES

SEHCEF S

375
750
1.5

Ceftriaxone Sodium 250/500/1000 mg & Sulbactam 125/250/500 mg Injection

CFS
CFB

SEHCEF

500
1gm

Ceftriaxone Sodium 500 mg/1 gm Injection

WORK TOGETHER, WORK BETTER

Benefits :

Sulbactam augments the activity of ceftriaxone against b-lactamase-producing bacteria.¹

Higher efficacy rates of 85.07% when compared to 79.84% of cefoperazone/sulbactam combination in treatment of RTIS & UTIS.¹

Well-tolerated.¹

¹.AnnClin Microbiol Antimicrob, 2013; 12:38

- ✓ Respiratory Tract Infections
- ✓ Acute Bacterial Otitis Media
- ✓ Skin and Skin Structure Infections
- ✓ Urinary Tract Infections
- ✓ Bacterial Septicaemia
- ✓ Bone and Joint Infections
- ✓ Intra-Abdominal Infections
- ✓ Pre-Operative Prophylaxis





AN OUTSTANDING
ANTIBIOTIC FOR
MAXIMUM PROTECTION

SEHCEF ▶ SB

Cefoperazone Sodium 1000 mg + Sulbactam 500 mg

Injection

STERILIZE THE BACTERIAL INFECTED ZONE

Cefoperazone

- Broad spectrum 3rd generation cephalosporin.
- Covers both Gram (+) and Gram (-) Bacteria.

Sulbactam

- Sulbactam is a beta-lactamase inhibitor given in combination with beta-lactam antibiotics to inhibit beta-lactams.

***Community Acquired Pneumonia**

***Septicemia**

***Urinary Tract Infections**

***Post operative infections**

***Skin & Soft Tissue infection**

***Gynecological infections**





ALL ROUND
PERFORMANCE AGAINST
VARIOUS INFECTIONS

Sehpod^{cv} 200
Cefpodoxime 200mg +Potassium Clavulanate 125mg Tablet

Sehpod²⁰⁰
Cefpodoxime 200 mg Tablets

Sehpod^{cv}
Cefpodoxime Proxetil 50 mg & Potassium Clavulanate 31.25 mg Dry Syrup

POD
CIN

Sehpod^{50 DS}
Cefpodoxime 50 mg Dry Syrup

Sehpod^{100 DS}
Cefpodoxime 100 mg Dry Syrup

Benefits :

Potent antibacterial activity against both Gram-positive and Gram-negative bacteria.¹

Favourable pharmacokinetic profile which allows twice-daily administration.

Good or excellent clinical responses with overall efficacy rate of 78.4%.²

Better safety and compliance than amoxicillin-clavulanci acid.³

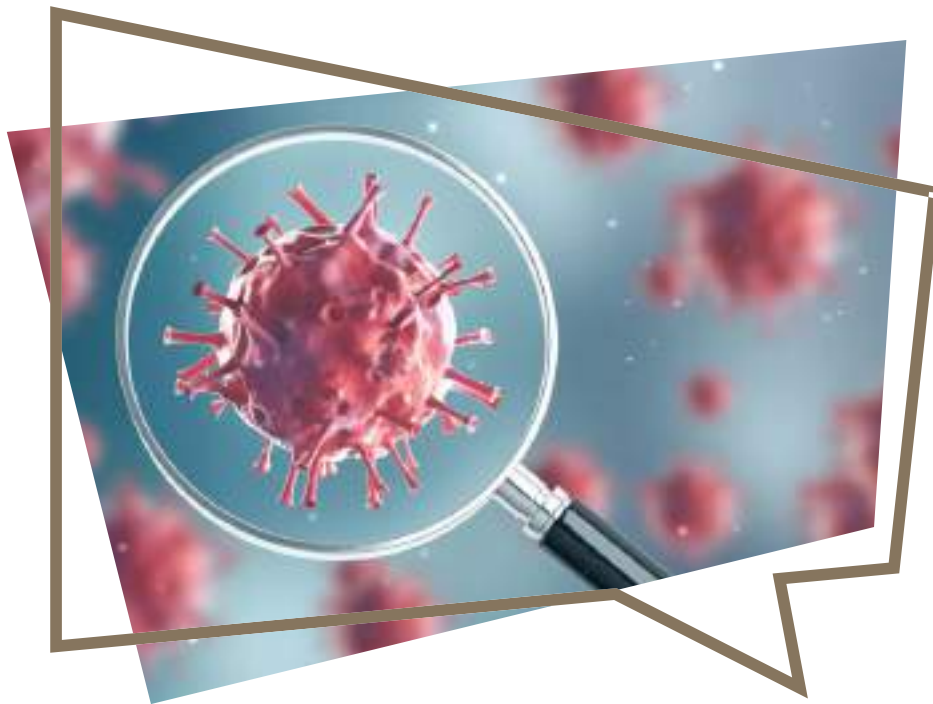
- * Acute Maxillary Sinusitis
- * Pharyngitis/Tonsillitis
- * Exacerbations of Chronic Bronchitis
- * Acute Community-Acquired Pneumonia
- * Skin and Skin Structure Infections
- * Uncomplicated Urinary Tract Infections
- * Urethral Gonorrhoea

1. Indian J Pediatr. 2004 Jun, 71(6):517-21.

2. Drugs 1991,42 Suppl 3:1-5

3. Presse Med 2006 Jan 35(1 Pt 1): 33-8





A Highly Targeted Approach To Tackle Infections

SEHCIN-500

Anhydrous Amikacin 500mg, Methyl Paraben IP 0.08% w/v,
Propyl Paraben IP 0.02%. **Injection**

Anhydrous Amikacin

- Is a potent antibiotic belonging to the aminoglycoside class.
- Used to treat serious bacterial infections.
- Commonly used to treat severe infections like septicemia, respiratory tract infections, urinary tract infections, intra-abdominal infections, bone and joint infections, and skin and soft tissue infections.

Methyl Paraben

- Prevents the growth of mold and harmful bacteria.

Propyl Paraben

- Prevents the growth of harmful bacteria and is therefore used as a preservative.

- Respiratory tract infections
- Broad-Spectrum Antibiotic Action
- Intramuscular and Intravenous Administration
- Treating potentially life-threatening infections





**Versatile performer against
Multiple infections**

WINTAZ-4.5

Piperacillin 4000mg +
Tazobactam injection 500mg **INJECTABLE**

For Herd To Break Pathogens

- ✓ **Broad spectrum aerobic gram positive, gramnegative & resistant pathogens**
- ✓ **Acts against tough to kill Pseudomonas sp.**
- ✓ **Easily seated by entering high safety profile.**

**TAZ
FXT**





FEED THE POWER OF RED TO
STARTED RBCS

SehfeXT

Ferrous Ascorbate 100mg + Folic Acid 100mcg + Zinc Sulphate 12mg +
Vitamin D3 200 IU **Tablets**

SehfeXT

Ferrous Bisglycinate 15mg + Folic Acid 100mcg **Drops**

FERROUS ASCORBATE+ FOLIC ACID

First choice of oral iron salts to treat
Iron deficiency anemia.¹

Shows positive effect on Hb value with
superior tolerability.¹

ZINC

Reduces number of infective episodes
and morbidity in patients with anaemia.

SehfeXT

Ferrous Bisglycinate 30mg + Folic Acid 150mcg +
Zinc Sulphate 22.5mcg **Syrup**

- ▶ **PREGNANCY RELATED ANEMIA**
- ▶ **IRON DEFICIENCY ANEMIA**
- ▶ **POST-SURGICAL BLOOD LOSS**
- ▶ **CHRONIC BLOOD LOSS**

1. Indian Journal of clinical Practice, Vol. 22. No. 11, April 2012





ENSURE RICH HEALTH WITH PROTEIN TREASURE

(CHOCOLATE FLAVOUR) & (VANILLA FLAVOUR)

Sehvit[®]-PRO

Protein 20% 7.5 gm + DHA 10% 75 mg + Pyridoxine Hydrochloride 1.5mg + Cynaecoblammin 3mcg + Vit D3 300 iu + Folic Acid 1mg + Niacinamide 75mg + Calcium 600mg + Manganese Sulphate 5mg + Zinc Sulphate 5mg + Iron 30mg + Magnesium Oxide 12mg + Copper Sulphate 7.5mg + Selenium Dioxide 60mcg + Sodium Chloride 100mg + Potassium Iodide 300mcg

VITALIZES LIFE WITH RICHNESS OF PROTEIN

- Increases muscle mass and strengthens bones.
- DHA improves cognitive function & promotes neuroplasticity.
- Helps to support carbohydrate & protein need post exercise.
- Strengthens the immune system against illness.
- ▶ **As protein Supplement**
- ▶ **A Compromized Immunity**
- ▶ **After prolonged illness**
- ▶ **Physical Fatigue and Lethargy**
- ▶ **In Geriatrics & Convalescence**

**VIT
CAL**





INDUCE STRENGTH & MASS
IN WEAK BONES

SEHCAL ▶ CT

Calcitriol 0.25mcg + Calcium Citrate 425mg + Zinc Oxide 20mg +
Magnesium Oxide 40mg **Softgel Capsules**

SEHCAL SEHCAL ▶ D3

Calcium Carbonate 1250mg + Vitamin D3 250 IU **Tablets**
Cholecalciferol 60000 IU **Sachet**

Cholecalciferol (Vitamin D3) 60000 IU **Softgel Capsule**

SEHCAL ▶ D3 SEHCAL

Cholecalciferol 400 IU **Drops**

Calcium Carbonate 625mg + Magnesium hydroxide 180mg +
Zinc Gluconate 14mg + Vitamin D3 200 IU **Syrup**

Calcium Citrate :

Averts bone loss and stabilized bone density.

Calcitriol :

Increases bone mineral density by decreasing bone absorption.

Magnesium :

Suppresses bone turn over.

Zinc :

Stimulatory effect on osteoblastic bone formation & mineralization.

- ▶ **Osteoporosis**
- ▶ **Postmenopausal Osteoporosis**
- ▶ **Drug Induced Osteoporosis**
- ▶ **Pregnancy / Lactation**





FOR MAXIMUM STRENGTH
TO BONES & JOINTS

Sehvit[®] K₂-7

Calcium Carbonate 500 mg + Calcitriol IP 0.25 mcg + Vitamin K2-7 45 mcg +
Methylcobalamin IP 1500 mcg + L-Methyl Folate 800 mcg +
Magnesium Oxide IP 20mg + Zinc Oxide IP 7.5 mg Softgel Capsules

Sehvit[®]

Multivitamin & Multimineral with Antioxidant **Syrup (100/200 ml)**

Sehwin[®] Shots

Vitamin D3 oral solution

Sehvit[®]

Multivitamin & Multimineral **Drops**

Calcium Carbonate : Promotes bone mineral density.

Calcitriol : Most active Vitamin D3 metabolite faster onset of action enhances calcium absorption faster resolution of symptoms.

Omega 3 Fatty Acid : Reduces inflammation & improve joint flexibility. Helps strengthen the immune system & brain function.

Mehtylcobalamin : Essential for maintain a healthy nervous system & energy levels.

Folic Acid : Strengthens foetal development Important for cell growth & metabolism.

Boron : Building strong bones, treating osteoarthritis.

FRACTURES

PREGNANCY

OSTEOMALACIA

OSTEOPOROSIS

POSTMENOPAUSAL

OSTEOPOROSIS

SVT
S7G





A POWERFUL COMBINATION
FOR GOOD HEALTH

Sehvit[®] 7G Softgel Capsules

L-Glutathione-2mg, Co-enzyme Q10-30mg + Omega-3 Fatty Acid (EPA-90mg) (DHA-60mg) + Ginseng Extract-42.5mg + Citrus Bioflavonoids-20mg + Garlic Extract-20mg + Ginkgo Biloba Extract-10mg + Green Tea Extract-15mg + Green Coffee Bean Extract-2mg + Ginger Extract-2mg + Lutein-250mcg + Natural Mixed Carotenoid-11.33mg + Wheat germ oil-25mg + Amino Acid Choline Bitartrate-25mg + Vitamins Benfotiamine-1.5mg + Biotine-100mcg + Folic Acid-150mcg + Vitamin-K-10mcg + Piperine-5mg + Vitamin-B6-1mg + B12-1mcg + D3-200IU + Nicotinamide-20mg + Calcium Ascorbate-45mg + Calcium Phosphate-20mg + Phosphorus-15.45mg + Ferrous Fumarate-30mg + Magnesium Oxide-1.5mg + Potassium Iodide-150mcg + Zinc Oxide-15mg + Copper Sulphate Pentahydrate-0.5mg + Chromium Picolynate-65mcg + Potassium Chloride-4mg + Elemental Potassium-3.6mg + Sodium Borate-150mcg + Nickel Sulphate-5mcg + Stannous Chloride Hydrate-10mcg + Lactic Acid Bacillus-150million spores

Sehvit[®] G Softgel Capsules

Ginseng Extract Powder 42.5mg + Vitamin C 15mg + Vitamin E Acetate 5mg + Niacinamide 5mg + Calcium Pantothenate 1.5mg + Vitamin B2 1.28mg + Vitamin B1 1mg. + Vitamin B6 1mg + Vitamin A Palmitate 461.5mcg. + Folic Acid 150mcg + Vitamin D3 5mcg. + Vitamin B12 (as Cyanocobalamin) 0.8mcg + Calcium (as Dibasic Calcium Phosphate) 75mg. + Phosphorous (as Dibasic Calcium Phosphate) 58mg. + Ferrous Fumerate 30mg + Zinc (as Zinc Oxide) 10mg. + Magnesium (as Magnesium Sulphate) 3mg + Potassium Sulphate 2mg. + Copper (as Cupric Sulphate) 0.5mg + Manganese (as Manganese Sulphate) 0.5mg + Iodine (as Potassium Iodine) 100mcg.

- ✔ Protect against free radicals that damage cells.
 - ✔ Used in treatment of cancer.
 - ✔ Lowering high cholesterol levels.
 - ✔ Help in formation of hemoglobin as well as bones.
 - ✔ Treatment of allergies, heartburn.
 - ✔ Improving the blood flow and reducing short-term memory loss.
- * **Controls Hair Falls**
 - * **Oxidative stress**
 - * **Imbalanced Diet**
 - * **CV Disorders**
 - * **Diabetes Therapy**
 - * **Antibiotic Therapy**
 - * **Stress & Infertility**
 - * **General Debility**





QUALITY NUTRITION WITH... EXTRA POWERED LYCOPENE

SEHVIT-[®]LY

Lycopene + Multivitamin + Multiminerals + Antioxidants SYRUP
Lycopene+VitA+VitC+VitE+zinc sulphate Monohydrate Softgel Capsules

SEHVIT-[®]BL

Vitamin B-Complex with L-Lysine **Syrup**

FLOURISHES HEALTH NATURALLY

- Boost body immunity
- Reduces oxidative stress
- Slows the progression of atherosclerosis
- Stimulates the proliferation of osteoblast cells
- Provides antioxidant protection in diabetes
- Exhibits positive effect on growth, energy & appetite
- Promotes bone mineral density
- Reduces high homocysteine levels
- Reverses degenerative diseases
- ◆ Good for Heart Health
- ◆ General Debility
- ◆ Oxidative Stress
- ◆ Diabetes
- ◆ Macular Degenerative Diseases
- ◆ Coronary Heart Diseases
- ◆ SSTI

**SLY
SGT**





**HELPS PROMOTE IMMUNE
SYSTEM & PLATELET PRODUCTION**

SEHWIN[®] GT

GILOY & TULSI SYRUP (200 ML)

**CURE DENGUE AND INCREASE
PLATELET COUNT**

Tried and Trusted answer in DENGUE

...novel option of Carica papaya leaf extract (SYOPLATE) can be optimum offering which is simple, convenient, cost effective, safe and efficacious adjuvant in the treatment of thrombocytopenia. Journal of The Association of Physicians of India, Vo. 64, June 2018

- ▶ No side effect
- ▶ Doctors most trusted brand
- ▶ Increase platelet count from the first day of therapy
- ▶ Prevent platelet breakdown by dengue virus.

- * **Immuno-Modulator**
- * **Dengue/Malaria/Typhoid Fever**
- * **Acute Microbial Infections**
- * **Platelet Booster**





OVERCOME THE ALLERGIC
SYMPTOMS WITH...

SEHCIT▶M

Levocetirizine 5 mg + Montelukast 10 mg Tablets

SEHFE▶M

Fexofenadine Hydrochloride 120mg. + Montelukast Sodium 10Mg Tablets

SEHCIT▶5

Levocetirizine 5 mg Tablets

SEHCIT▶M

Levocetirizine 2.5 mg + Montelukast 4 mg Syrup

The Combination :

More effective than monotherapy
in allergic rhinitis.

Significantly decreases nasal symptoms
in patients with persistent allergic rhinitis.

1. Ann Allergy Asthma Immunol. 2006 Nov; 97(5):664-71.
2. Am J Rhinol Allergy, 2011 Jan-Feb; (25):e 1-6

✓ **Allergic Rhinitis**
(Perennial/Seasonal)

✓ **Chronic Idiopathic Urticaria**

**CIT
PRE**





**For various cortico-steroid
RESPONSIVE CONDITIONS**

Sehpred-4

Methylprednisolone 4 mg **Tablets**

- **Rapidly absorbs and achieves maximum plasma concentration within 1.5 to 2.5 hours**
- **Better penetration into lung tissue compared to hydrocortisone & prednisolone**
- **Lesser mineralocorticoid potency than hydrocortisone and prednisolone**
- **Blocks the production of substances that trigger allergic reactions**

- ▶▶ **ENDOCRINE DISORDERS**
- ▶▶ **DERMATOLOGIC DISEASES**
- ▶▶ **RESPIRATORY DISEASES**
- ▶▶ **RHEUMATIC DISORDERS**
- ▶▶ **ALLERGIC STATES**
- ▶▶ **HEMATOLOGIC DISORDERS**





**FOR TARGETED ACTION ON ACUTE
ALLERGY & INFLAMMATION**

Sehcort

Deflazacort 6 mg Tablets

.... Ensures Fast & Desired Result

Deflazacort :

Does not process long term or short term side effects unlike other conventional steroids.

J Postgard Med. 20009 Oct-Dec; 55(4):296-300

Causes lesser osteoarthritis, growth retardation and weight gains compared to other steroids.

J Postgard Med. 20009 Oct-Dec; 55(4):296-300

Fast onset of action as it is immediately converted to its active form in the plasma.

Indian J Dermatol 2008;53(4):167-70

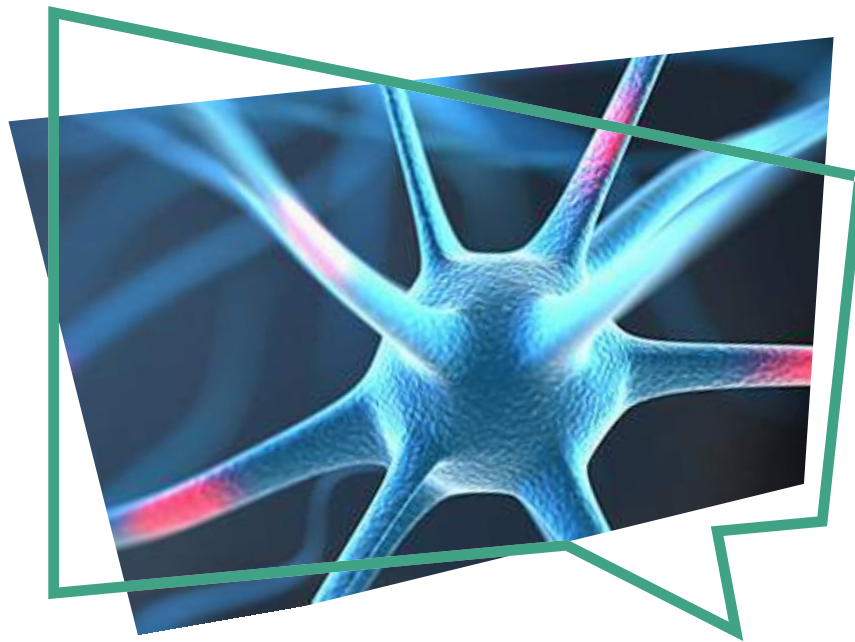
Products greater immuno- suppression as compared to other steroids.

Indian J Dermatol 2008;53(4):167-70

- Rheumatoid Arthritis**
- Ankylosing Spindylitis**
- Inflammatory Bowel Diseases**
- Infammatory Skin Disorders**
- Asthma**

**COR
COB**





AN ACE OPTION FOR BETTER NERVE HEALTH

INJECTION

SEHCOB-PLUS

Methylcobalamin 1000mcg + Thiamine HCL 100MG. + Pyridoxine HCL 100mg +
Nicotinamide 100mg + D- Panthenol 50mg .

SEHCOB-PN

Pregbalin 75mg+ Methylcobalamine 1500mcg+ Nortriptyline Hydrochloride 10mg Tablets

SEHCOB-OD

Methylcobalamin IP 1500mcg+Alpha Lipoic Acid IP 200mcg+
Folic Acid IP 1.5mg+Pyridoxine Hydrochloride IP 3mg+Biotin IP 30mcg **CAPSULES**

METHYCOBALAMIN

- » Methylcobalamin is a cobalamin, a form of vitamin B12.
- » Vitamin B12 is important for the brain and nerves, and for the production of red blood cells.
- » Methylcobalamin is sometimes used in people with pernicious anemia, diabetes & Other Conditions.

THIAMINE

- » Thiamine significantly reduces the raised glutamine levels due to alcohol with drawal in chronic Alcoholics, thus limits the neurotoxicity

PYRIDOXINE

- » Pyridoxine is used for preventing & treating low levels of Vitamin B6 & the anemia that may result Pyridoxine is required for the proper function of sugars, fats & proteins in the body It is also required for the proper growth and development of the brain, nerves, skin, and many other parts of the body.

NICOTINAMIDE

- » Nicotinamide (NAM) is a form of vitamin B3.
- » It is promoted as an anti-aging supplement because it boosts your body's levels of NAD⁺, which acts as fuel for many key biological processes.

INDICATION:-

Nerve Damage | Diabetic Neuropathy

Alcoholic Neuropathy Peripheral Neuropathy

Muscular Dystrophy | Neuritis and Neuralgia





DREAMS COME TRUE

SEHPOWER

Power Capsule With Shilajit, Musli, Ashwagandha

- ▲ Raises energy & stamina level in both males and females minimizes premature ejaculations by enhanced libido.
- ▲ Restores systemic balance in hormonal system.
- ▲ Helps in living healthy, pleasurable & satisfactory life.

*** Low Female & Male Libido**

*** Sexual Weakness**

*** Erectile Dysfunction * Premature Ejaculation**



**POW
URI**



COMMON GYNECOLOGICAL DISORDERS TREAT HER WITH CONFIDENCE

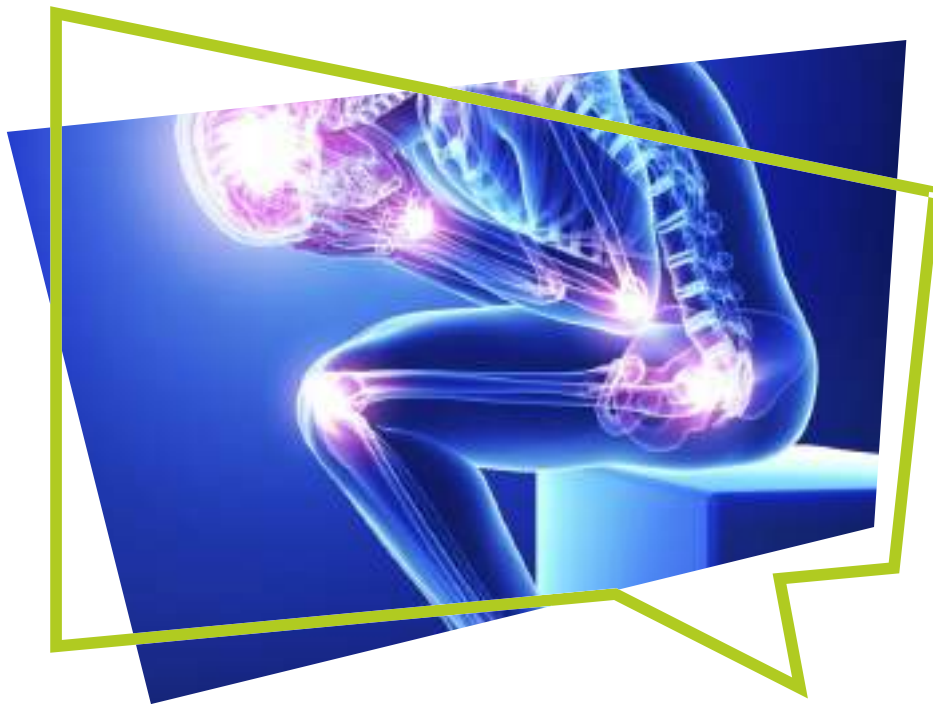
SEHWIN[®] URI

A complete Uterine Tonic

- ▲ Stimulates ovarian function.
- ▲ Maintains optimum hemoglobin level.
- ▲ Reduces abnormal inflammation of uterine tissue.
- ▲ Helps in restoring and maintaining the cyclical rhythm of menstrual cycle.

**Dysmenorrhoea * Menorrhagia * Leucorrhoea
* Pre-Menopausal Complications**





QUICK PAIN RELIEF

SEHJOINT Oil Capsule

Herbal Oil/Capsules for Joint & Muscular Pain

- ▶ Improves the joint mobility & flexibility.
- ▶ Relieves pain & stiffness due to overexertion, strain or exercise.
- ▶ Reduces swelling & tenderness, promotes blood circulation.
- ▶ Controls ama-vata (Sciatica, Gout, Lumbago) causes no side effects.
- ▶ Provides greater pain relief.
- ▶ Improves local circulation & relaxes muscle.

*** BACK PAIN * MUSCULAR STIFFNESS
* MYALGIA/LUMBAGO * AMA-VATA**





**The First choice to manage
HYPERGLYCEMIA**

WIN GLIM

M1
M2

Glimepiride 1 mg + Metformin SR 500 mg **Tablet**
Glimepiride 2 mg + Metformin SR 500 mg **Tablet**

HELPS KEEP THE CONTROL

- Efficacious in reaching HbA1c,
FPG & PPG goals**
- Preserves myocardial Preconditioning
in ischemic events²**
- Effective as add-on to insulin therapy**

1 J Diabetes Complications. 209 Nov-Dec;23(6):376-9

2. Vascular Health and Risk Management 2012;8 463-472

3. Diabetes Res Clin Pract. 2014 Jan 8. pii: S0168-8227 (1400023-0



Always There For
Your Care



Sehwin Healthcare Pvt. Ltd.[®]

An ISO 9001 : 2015 Certified Co.

Medicine Square,
Khasra No. 40 // 2, Plot No. 64 & 65, VPO Mohra, Distt Ambala 133004
Contact: +919350346246